



# Myomesin-2 Polyclonal Antibody

<b>Catalog No</b>	YP-Ab-03163
<b>Isotype</b>	IgG
<b>Reactivity</b>	Human;Mouse;Monkey
<b>Applications</b>	WB;ELISA;IHC
<b>Gene Name</b>	MYOM2
<b>Protein Name</b>	Myomesin-2
<b>Immunogen</b>	The antiserum was produced against synthesized peptide derived from human MYOM2. AA range:612-661
<b>Specificity</b>	Myomesin-2 Polyclonal Antibody detects endogenous levels of Myomesin-2 protein.
<b>Formulation</b>	Liquid in PBS containing 50% glycerol, 0.5% BSA and 0.02% sodium azide.
<b>Source</b>	Polyclonal, Rabbit,IgG
<b>Purification</b>	The antibody was affinity-purified from rabbit antiserum by affinity-chromatography using epitope-specific immunogen.
<b>Dilution</b>	WB 1:500-2000;IHC-p 1:50-300; ELISA 2000-20000
<b>Concentration</b>	1 mg/ml
<b>Purity</b>	≥90%
<b>Storage Stability</b>	-20°C/1 year
<b>Synonyms</b>	MYOM2; Myomesin-2; 165 kDa connectin-associated protein; 165 kDa titin-associated protein; M-protein; Myomesin family member 2
<b>Observed Band</b>	165kD
<b>Cell Pathway</b>	Cytoplasm, myofibril, sarcomere, M line .
<b>Tissue Specificity</b>	PNS,Skeletal muscle,
<b>Function</b>	function:Major component of the vertebrate myofibrillar M band. Binds myosin, titin, and light meromyosin. This binding is dose dependent.,similarity:Contains 5 fibronectin type-III domains.,similarity:Contains 5 Ig-like C2-type (immunoglobulin-like) domains.,subunit:Interacts with TTN/titin.,
<b>Background</b>	The giant protein titin, together with its associated proteins, interconnects the major structure of sarcomeres, the M bands and Z discs. The C-terminal end of the titin string extends into the M line, where it binds tightly to M-band constituents of apparent molecular masses of 190 kD and 165 kD. The predicted MYOM2 protein contains 1,465 amino acids. Like MYOM1, MYOM2 has a unique N-terminal domain followed by 12 repeat domains with strong homology to either fibronectin type III or immunoglobulin C2 domains. Protein sequence comparisons suggested that the MYOM2 protein and bovine M protein are identical. [provided by RefSeq, Jul 2008],



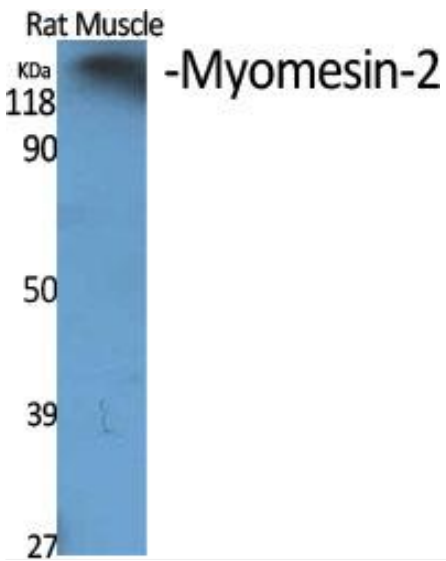
**matters needing attention**

Avoid repeated freezing and thawing!

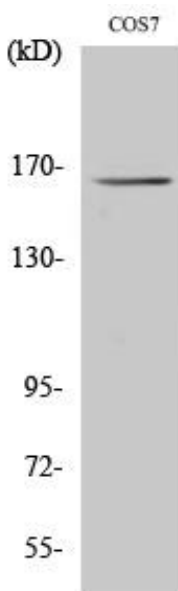
**Usage suggestions**

This product can be used in immunological reaction related experiments. For more information, please consult technical personnel.

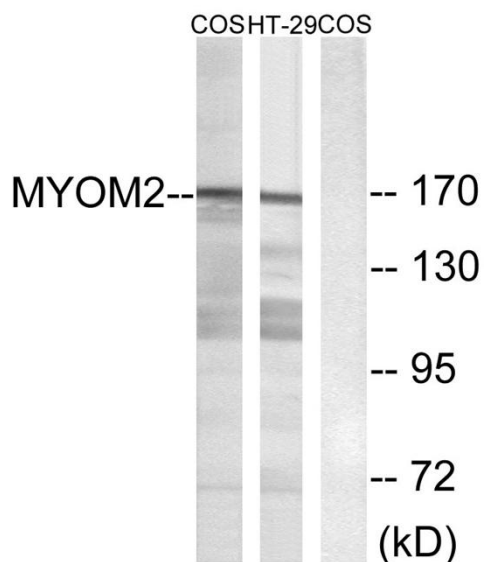
## Products Images



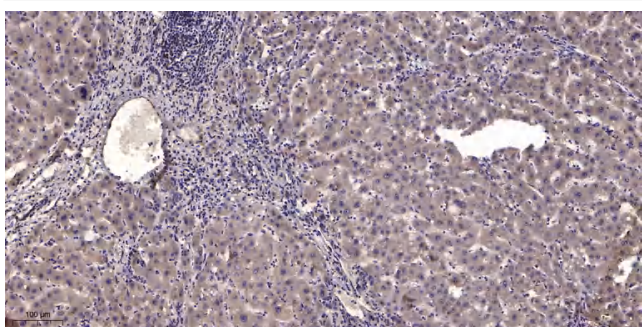
Western Blot analysis of various cells using Myomesin-2 Polyclonal Antibody diluted at 1:500



Western Blot analysis of HT29 cells using Myomesin-2 Polyclonal Antibody diluted at 1:500



Western blot analysis of lysates from COS7 and HT-29 cells, using MYOM2 Antibody. The lane on the right is blocked with the synthesized peptide.



Immunohistochemical analysis of paraffin-embedded human liver cancer. 1, Antibody was diluted at 1:200(4° overnight). 2, Tris-EDTA,pH9.0 was used for antigen retrieval. 3,Secondary antibody was diluted at 1:200(room temperature, 45min).